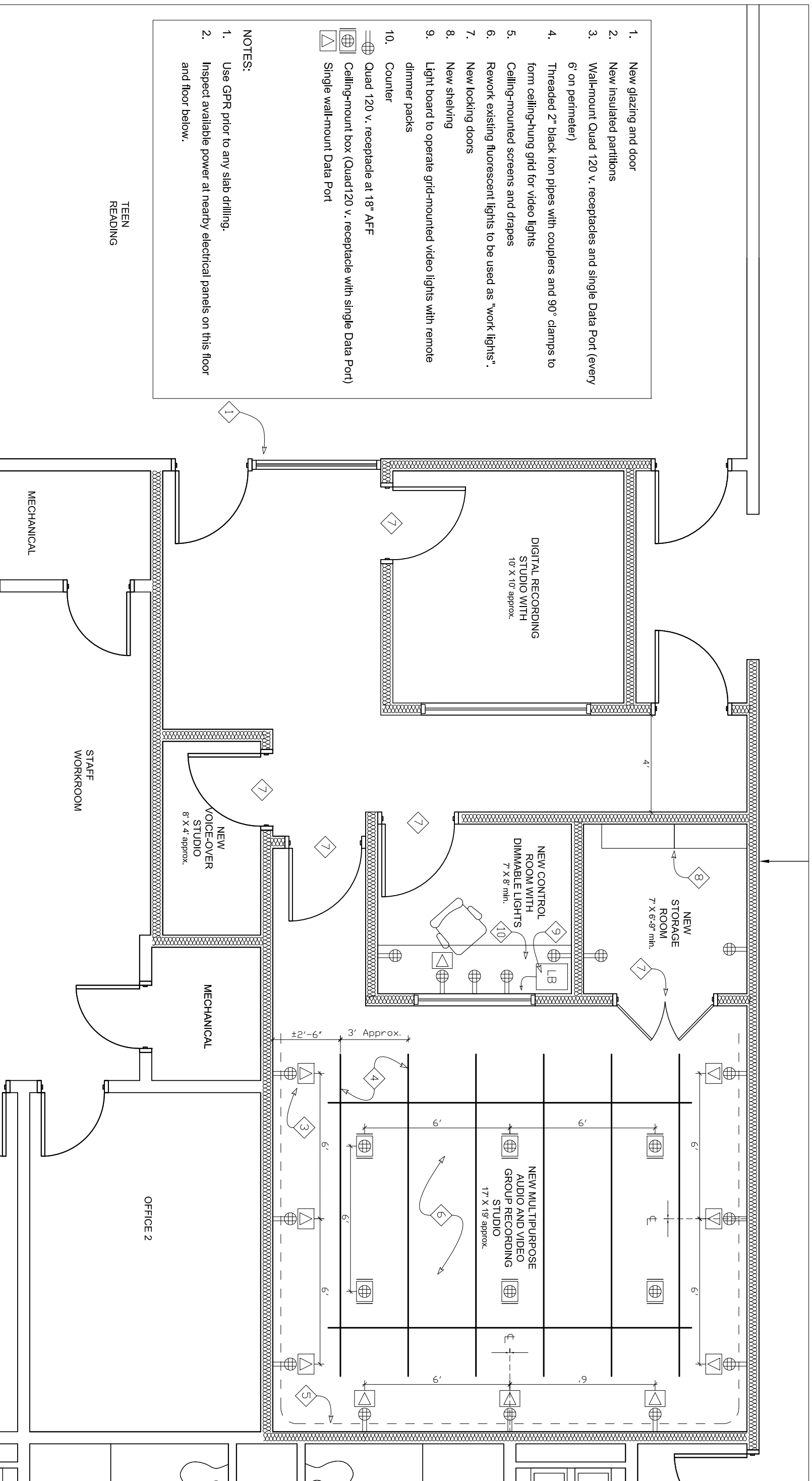


1. New glazing and door
 2. New insulated partitions
 3. Walk-mount Quad 120 v. receptacles and single Data Port (every 6' on perimeter)
 4. Threaded 2" black iron pipes with couplers and 90° clamps to form ceiling-hung grid for video lights
 5. Ceiling-mounted screens and drapes
 6. Rework existing fluorescent lights to be used as "work lights".
 7. New locking doors
 8. New shelving
 9. Light board to operate grid-mounted video lights with remote dimmer packs
 10. Counter
- ⊕ Quad 120 v. receptacle at 18" AFF
 ⊕ Ceiling-mount box (Quad 120 v. receptacle with single Data Port)
 ▽ Single wall-mount Data Port

- NOTES:**
1. Use GPR prior to any slab drilling.
 2. Inspect available power at nearby electrical panels on this floor and floor below.



RECORDING STUDIO
 MILK LIBRARY
 Rev. 3. 07/29/14, Rev. 2. 07/24/14, Rev. 1. 07/11/14, 06/20/14
SCALE 1/4" = 1'
 VERB' FIELD CONDITIONS